

## General

VBG 750V, part no.: 09-052500

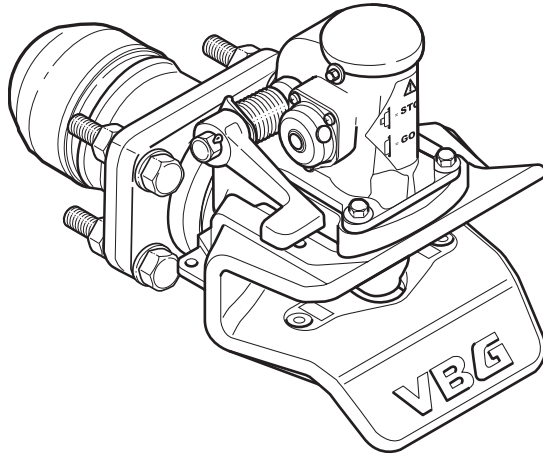
The VBG 750V coupling is designed for centre axle trailers, full trailers and dollies that use a  $\varnothing$  57.5 mm drawbar eye as per the VBG standard.

The coupling should be mounted to a drawbeam which fulfils the requirements of ISO 3584 cat. 3. The web thick-ness in the middle of the drawbeam must be 13-30 mm with an inner clearance of at least 160 mm. It is easiest to mount it to a VBG drawbeam, all of which meet these requirements.

The coupling has a high-quality corrosion resistance through electrolytic pre-treatment and a top-coat with very high wear resistance. To maintain the high quality of the surface treatment, VBG recommend that no futher paint is added to the coupling. If the coupling is over-painted, you run the risk of operational problems, a sticking signal/indicator pin or that important information is overpainted. Moving parts, plates and decals must all be thoroughly covered if the coupling is repainted.

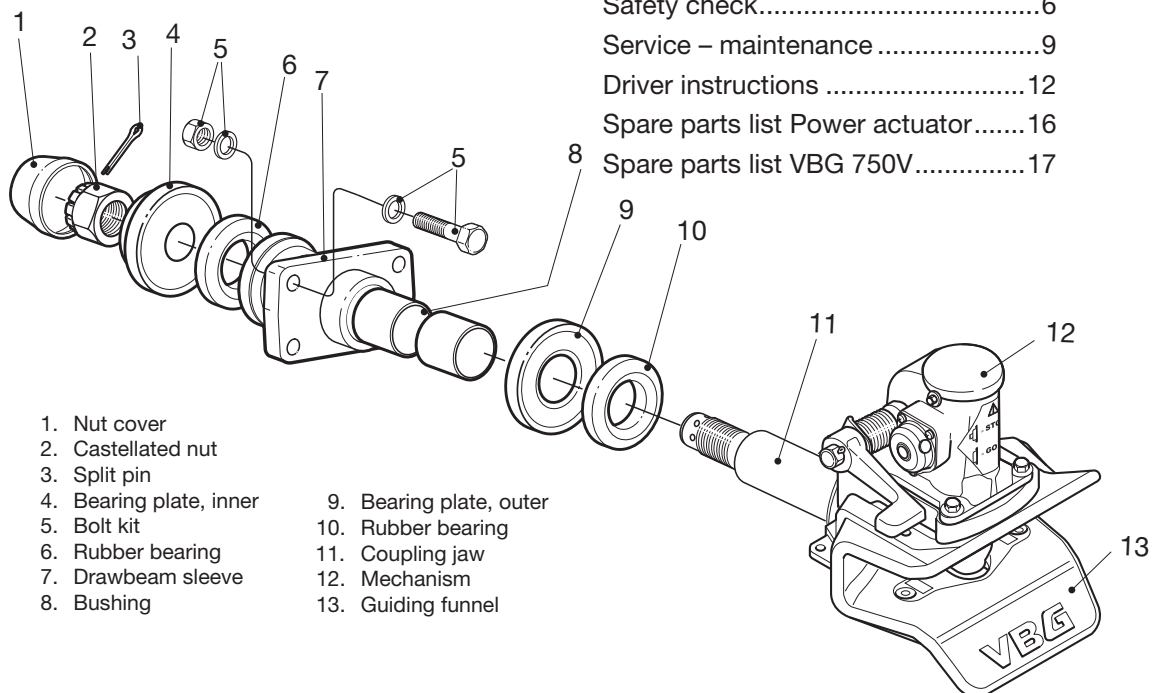
*Identify all parts before installation. Installation shall be done in a proper and competent manner. Always follow the instructions.*

*All directives and instructions should be kept in the vehicle for future service and maintenance.*



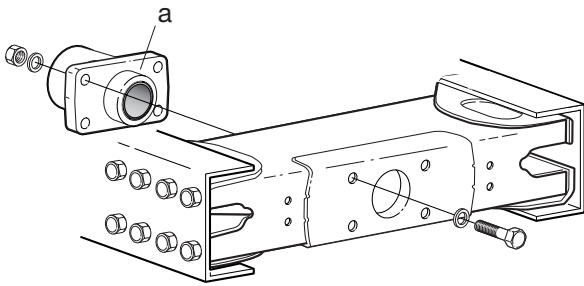
## Contents

- Mounting instructions.....2
- Safety check.....6
- Service – maintenance .....9
- Driver instructions ..... 12
- Spare parts list Power actuator..... 16
- Spare parts list VBG 750V..... 17



- |                         |                         |
|-------------------------|-------------------------|
| 1. Nut cover            | 9. Bearing plate, outer |
| 2. Castellated nut      | 10. Rubber bearing      |
| 3. Split pin            | 11. Coupling jaw        |
| 4. Bearing plate, inner | 12. Mechanism           |
| 5. Bolt kit             | 13. Guiding funnel      |
| 6. Rubber bearing       |                         |
| 7. Drawbeam sleeve      |                         |
| 8. Bushing              |                         |

# Mounting instructions



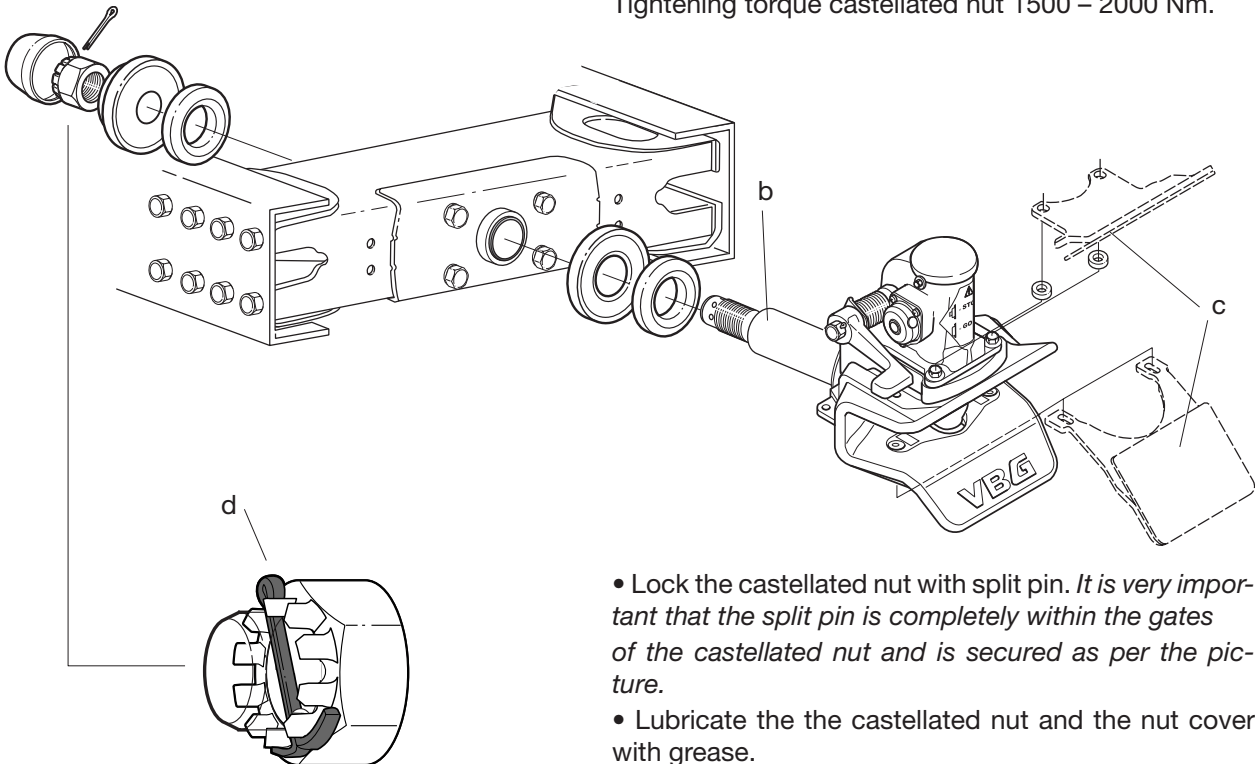
## Mounting of drawbeam sleeve

- Mount the drawbeam sleeve (a) with four screws as per the drawing. Flat washers with a minimum hardness of 200 HB must be under both bolt head and nut. Tightening torque M20 quality 8.8 (dry): 370 Nm.

## Mounting of coupling

- Lubricate the coupling jaw (b) and all its threads with grease. This prevents rust and makes future service work easier.
- Fit the other mounting parts as per the drawing. Mount accessories such as the coupling mouth extension (c) according to the drawing.

Tightening torque castellated nut 1500 – 2000 Nm.



- Lock the castellated nut with split pin. *It is very important that the split pin is completely within the gates of the castellated nut and is secured as per the picture.*
- Lubricate the the castellated nut and the nut cover with grease.
- Mount the nut cover.
- When the coupling is reassembled after service, a new split pin must always be used.

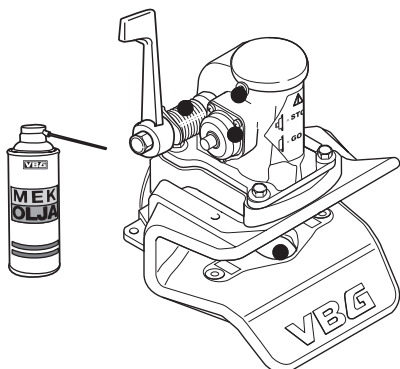
## Lubrication

Lubricate the coupling weekly with VBG mechanism oil or similar thin oil. For the maximum effect, the coupling should be open when it is being lubricated. VBG do not recommend the use of central greasing systems.

- Lubrication points (see adjacent drawing).

## Function check

Carry out the function check on page 6.

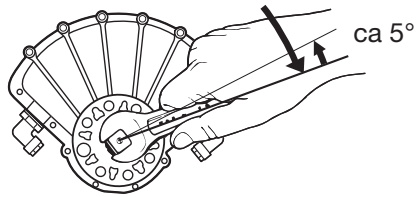


## Mounting of a power actuator

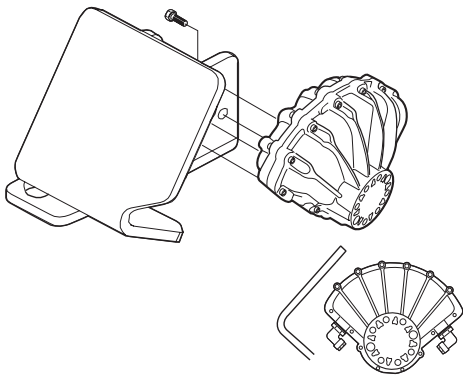
If the coupling is to be equipped with a power actuator, follow the directions below.

### Mounting of the actuator on the bracket

- Turn the shaft on the actuator clockwise until it can go no further and then turn it back approx. 5°.

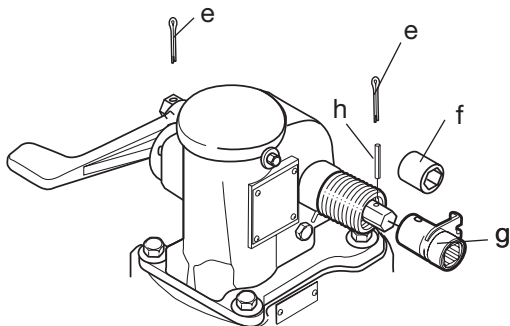


- Bolt the actuator tightly onto the bracket with the four screws. Tightening torque M8 quality 8.8 (dry): 25 Nm.

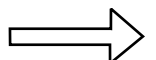
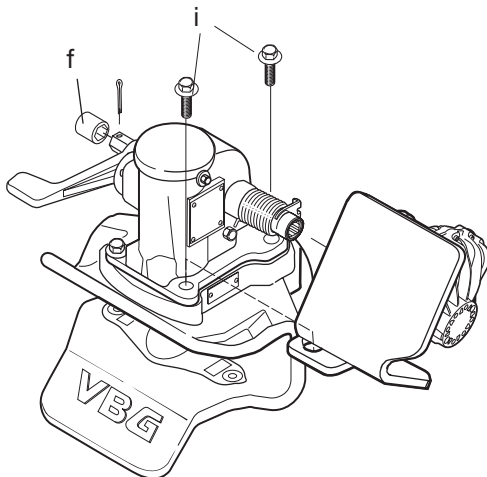


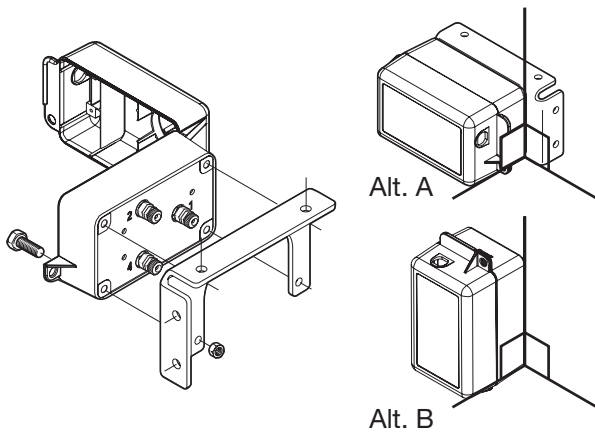
### Mounting the power actuator on the coupling

- Remove the two split pins (e) and the right hand bushing (f).
- Mount the adapter (g) on the hexagonal shaft and fit with the roll pin (h) through the hole in the adapter.
- Tap the hexagonal shaft to the left and lock the hook on the adapter into the hook on the spring.



- Assemble the bushing (f) on the left side and refit the split pin.
- Remove the two screws on the right side of the mechanism (i).
- Place the bracket and actuator on the coupling. Lock the bracket securely with the two long M12 screws which accompanied the power actuator unit. Tightening torque M12 quality 8.8 (dry): 90 Nm.






### Mounting of the control box

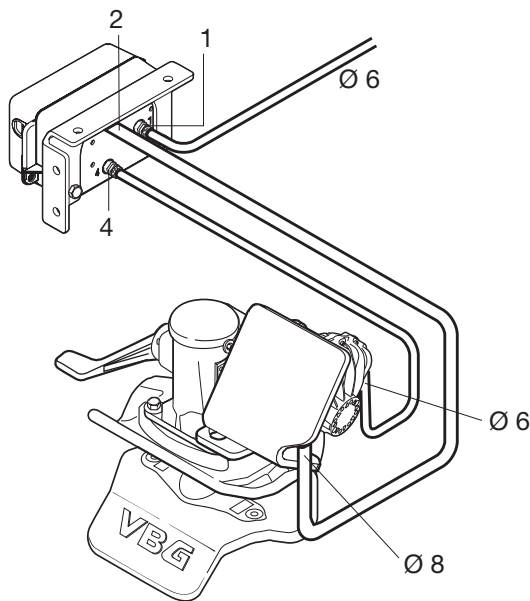
• Mount the control box close to the coupling so that the operation of the coupling can be watched. The control box must be positioned so that it is well protected from vibration, impact, dirt and ice formation.

Mount the control box as shown in Alt. A or B.

*NOTE! Electrically controlled control boxes are not permitted.*



**Warning!**  
*Never put your fingers in the coupling mouth because of the danger of them being crushed.*



### Fitting the Pipes

• Turn the handle on the control box to service position according to “Service position control box” on page 6.

• Connect the supply line to the control box output (marked 1).

• Connect the other 2 pipes to the control box outputs (2 and 4). Fit the protective cover.

• Connect the pipe from output 4 on the control box to the front output of the actuator. The pipe from output 2 is connected to the rear output of the actuator.

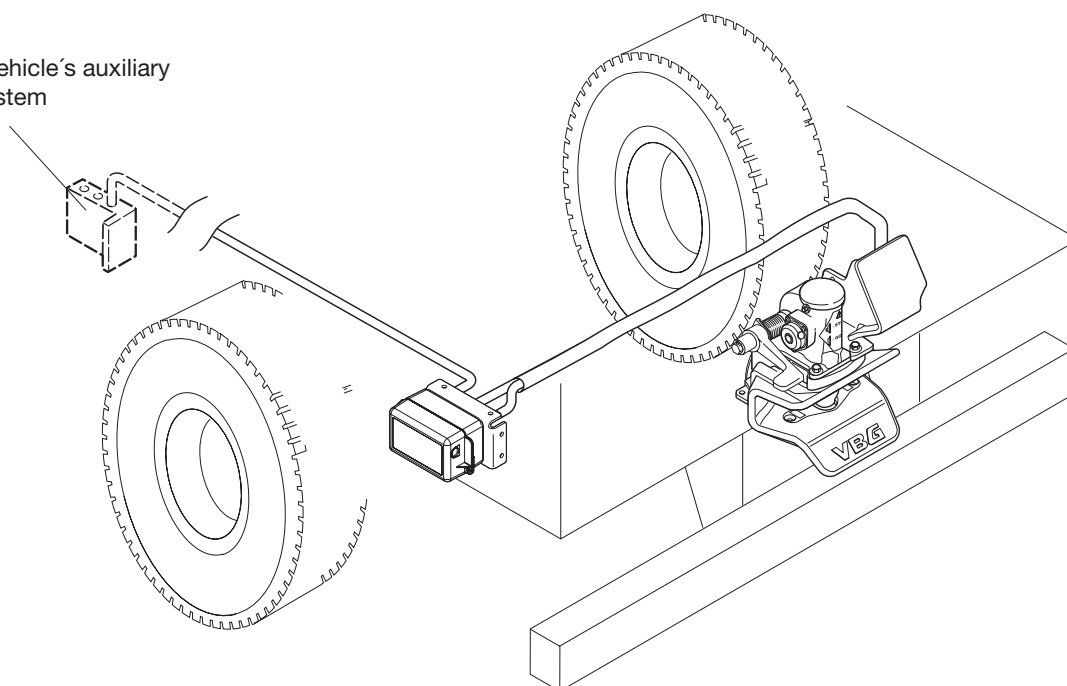
• Connect the supply line to the vehicle’s auxiliary air system. Working pressure 8 bar.

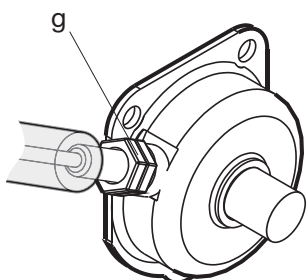
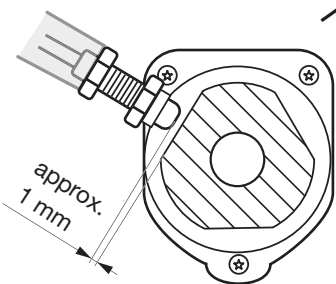
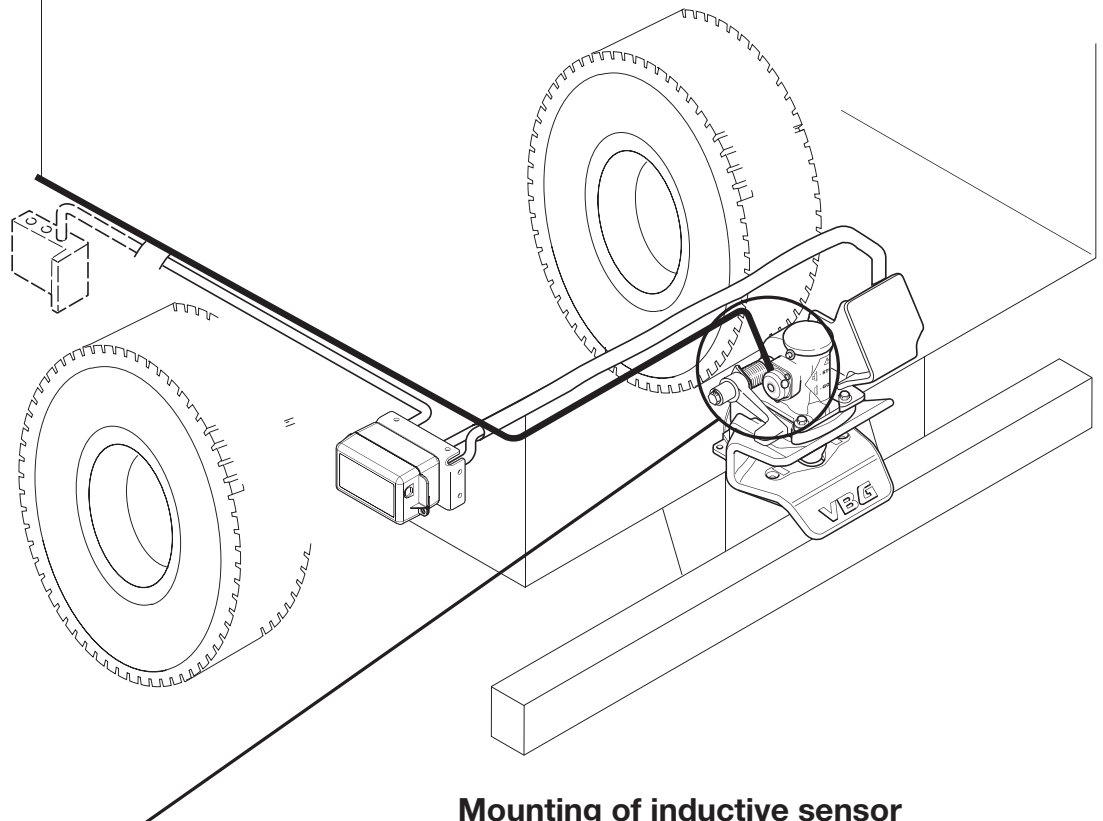
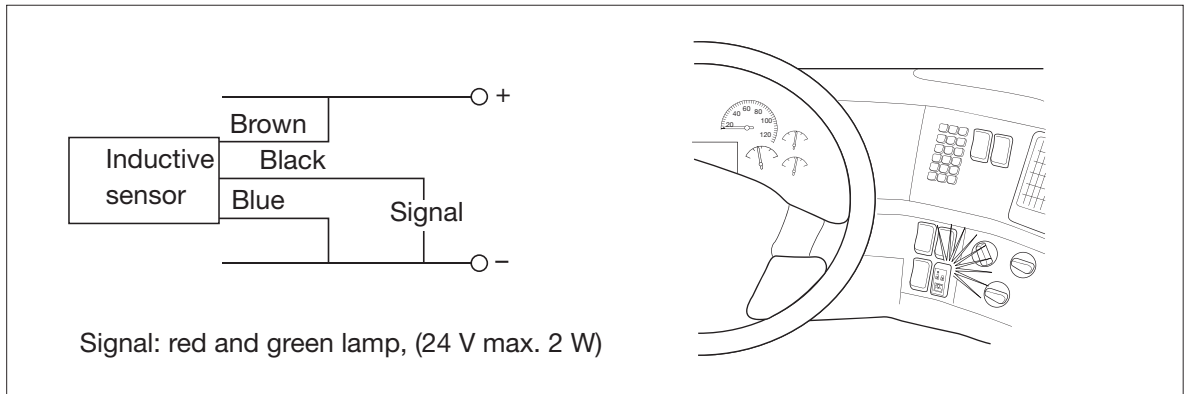
Maximum pressure 10 bar.

Always follow the truck manufacturer’s body building instructions.

*NOTE! Do not connect to the braking system.*

The vehicle’s auxiliary air system





### Mounting of inductive sensor

- Change the cover of the original lock indicator for the cover modified for the inductive sensor. Open the coupling so that the indicator pin is out. Wind the inductive sensor in until it touches the indicator pin. Wind the inductive sensor back one turn (the distance between the indicator pin and the inductive sensor should now be approximately 1 mm).

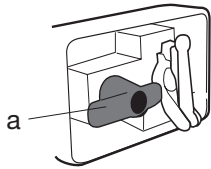
*Tighten the nuts (g), tightening torque max. 2 Nm.*

- If VBG's Indicator kit (part no. 09-099200) is used – connect the inductive sensor according to the mounting instructions. Otherwise connect the inductive sensor to the vehicle's electrical system (24 V). See wiring diagram above. Follow the truck manufacturer's instructions.
- When the coupling is closed and secured a green lamp in the cab should light up.
- When the coupling is open, a red lamp in the cab should light up. If the green lamp comes on when the coupling is open, adjust the gap between the sensor and lock pin so that the red lamp comes on.

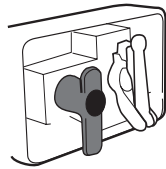
# Safety check

Carry out the safety check once a week. If the check shows that any of the wear limits have been exceeded or that the coupling's function is reduced, rectification must be carried out immediately.

Before any work or service is carried out on the coupling all air supply to the coupling must be cut off. Cut off the air supply by turning the control box' red handle a quarter turn anti-clockwise to OFF.



Air supply on



Service position  
air supply off



*If the coupling has been damaged as a result of jack-knifing, driving into a ditch, or being hit from behind, you must stop and replace the coupling.*



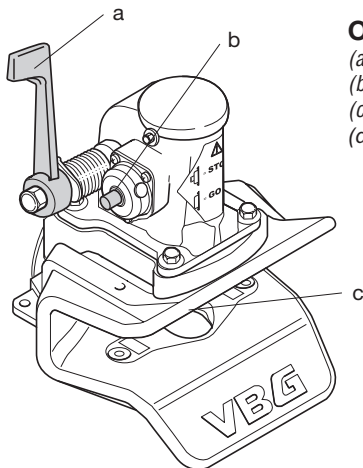
**Warning!**  
*Never put your fingers in the coupling mouth because of the danger of them being crushed.*

## Function check

- Check that the coupling bolt can be raised easily and that the handle and coupling bolt remain in the up position.

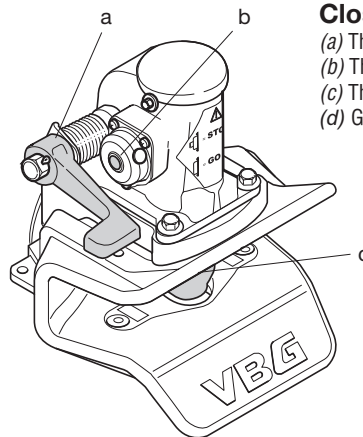
- Open and close the coupling and check that it corresponds as per the pictures below. If an inductive sensor is used, item (d) must be complied with.

*ALWAYS check that the coupling is closed and secure before driving. All criteria for closed coupling must be fulfilled before you start driving.*



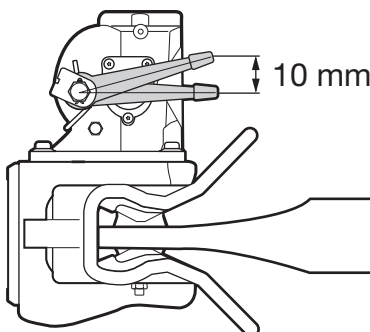
### Open coupling

- (a) The handle is raised approx. 90°
- (b) The indicator pin is out
- (c) The coupling bolt is up
- (d) Red lamp on in the cab

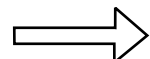


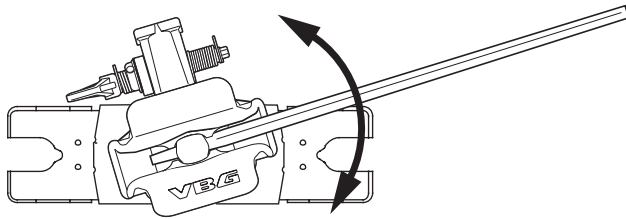
### Closed, secure coupling

- (a) The handle is down
- (b) The indicator pin is completely in
- (c) The coupling bolt is down
- (d) Green lamp on in the cab



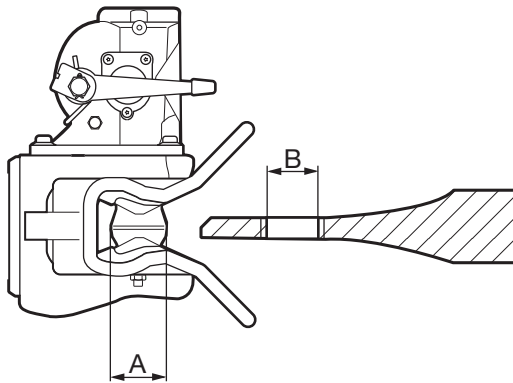
- When the coupling is closed, there must be approx. 10 mm clearance in the handle before the indicator/locking pin moves outwards.





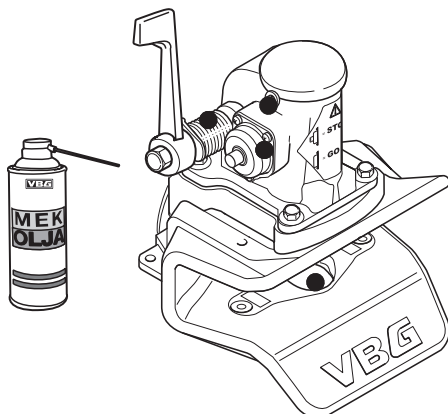
### Attachment

- Check that the coupling can be rotated in its mounting. The coupling must be closed when the rotation is carried out.



### Wear limits

A Coupling pin	max Ø 55.0 mm
B Drawbar eye	max Ø 59.5 mm
Vertical play in the coupling bolt	max 5.0 mm

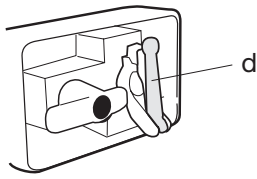


### Lubrication

Lubricate the coupling weekly with VBG mechanism oil or similar thin oil. For maximum effect, the coupling should be open when it is lubricated.

- Lubrication points (see drawing on the left)

Safety check contd.

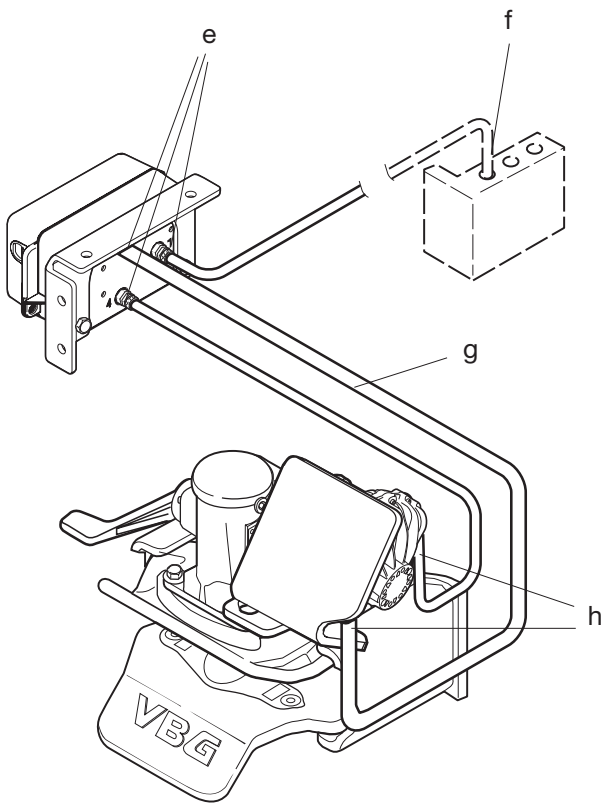


### Operation check - power actuator

- Fold out the yellow handle (d). Simultaneously press on the mark "Press" on the handle and turn the handle anti-clockwise to "OPEN". Then turn it back to "CLOSE".

The coupling pin should remain in the up/open position.

- Connect to the trailer according to the driver instructions on page 14-15.

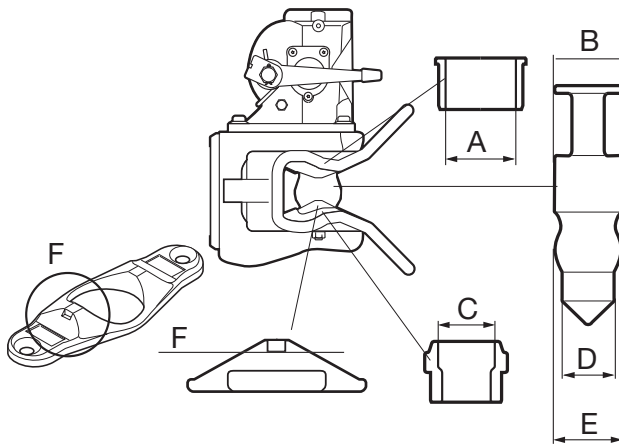


### Air leaks

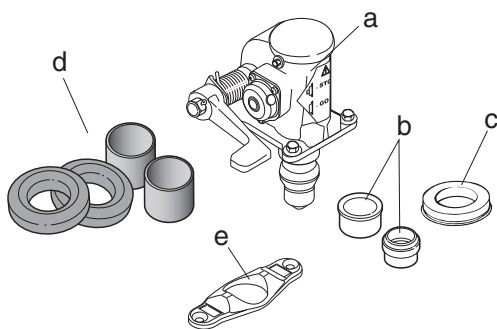
- Check that there is no audible air leakage from the valve (e), the connection to the auxiliary air system (f), pipes (g) or actuator (h).
- In extreme cold, minor air leaks can occur. These can be eliminated by cutting off the air supply by turning the control box's red handle (d) a quarter of a turn anti-clockwise to OFF.

Contact the nearest workshop for corrective measures.

# Service - maintenance



- It is important to remember that a coupling is a safety critical item and should be treated as such. Proper preventive maintenance, inspection and lubrication are essential for a long, safe and trouble-free service life.
- The length of service intervals depends on the type of trailer, load, road- and weather conditions etc. Servicing can best be carried out when other work or inspection of the vehicle is done, for example every 60 000 or 90 000 km.
- At least once a year the coupling must be dismantled and inspected for wear, corrosion, cracks or de-formation. Worn out or damaged parts must be replaced.
- If the daily overhaul or safety check shows that any of the wear limits have been exceeded or that the coupling's function is reduced, repairs must be carried out immediately.
- The fact that one of the coupling's wear limits have been exceeded indicates that other parts need service as well. Therefore, always remove the coupling from the drawbeam when changing the mechanism and bushings. Check the mounting parts and the drawbeam and replace worn out rubber bearings and bushings.



## Wear limits

A	inner diameter	max 59.5 mm
B	outer diameter	min 57.0 mm
C	inner diameter	max 45.7 mm
D	outer diameter	min 42.5 mm
E	outer diameter	min 55.0 mm
F	Wear plate	mark on wear plate
	Vertical play in the coupling bolt	max 5.0 mm

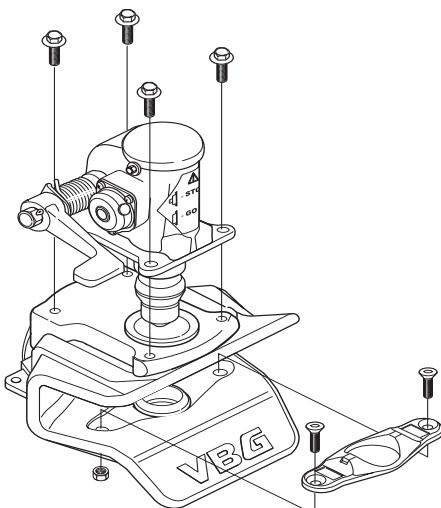
## Wear parts

- Mechanism
- Upper and lower jaw bushings
- Drawbar eye wear ring
- Rubber bearings and drawbeam sleeve bushings
- Wear plate

## Change of mechanism and bushings

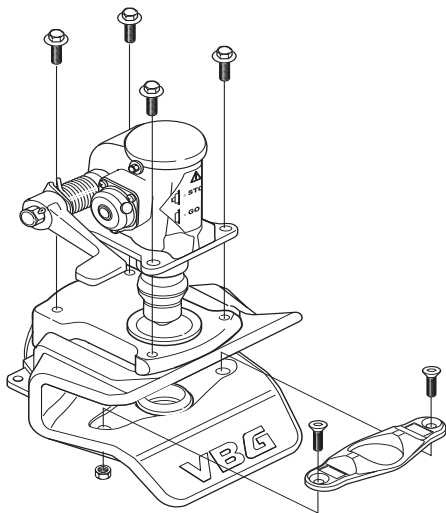
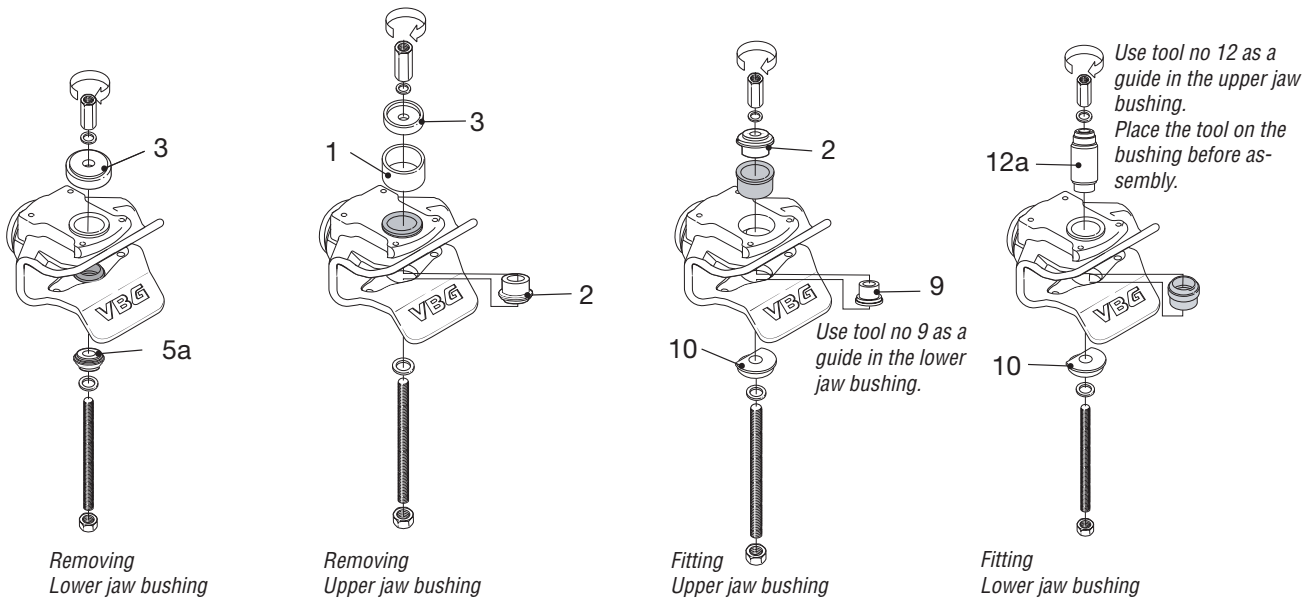
*If the coupling is equipped with a power actuator, the air supply to the control box must be cut off before work with the coupling is started.*

- Remove the mechanism by loosening the four screws and lift the mechanism from the coupling jaw.
- Remove the wear plate.

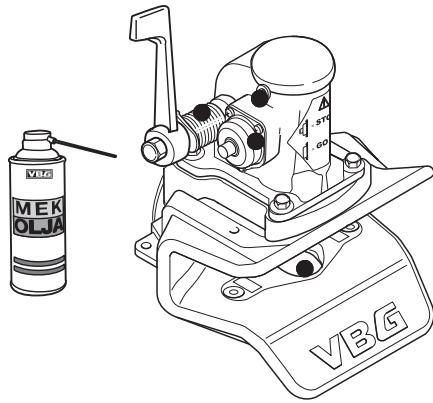


Service – maintenance contd.

- Change the guide funnel if damaged. Minor damage and deformations on the funnel are accepted, the guide funnel is a separate part from the coupling jaw and as long as the function is not reduced there is no need to replace the funnel.
- Change the bushings using VBG service tools. *Press* out the old bushings from below and *press* in the new bushings from above as per the figure. The bushings must not be welded in.

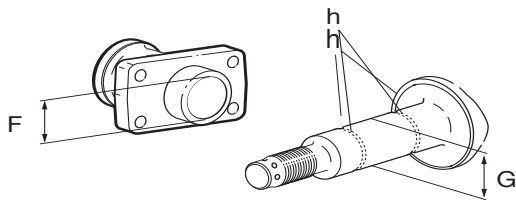


- Mount the wear plate. Tightening torque 47 Nm.
  - Put the new mechanism on the coupling jaw and fit the screws, but do not tighten completely.
  - Carry out the function check on page 6.
  - Tighten the screws.
- Tightening torque M12 quality 8.8 (dry): 90 Nm.



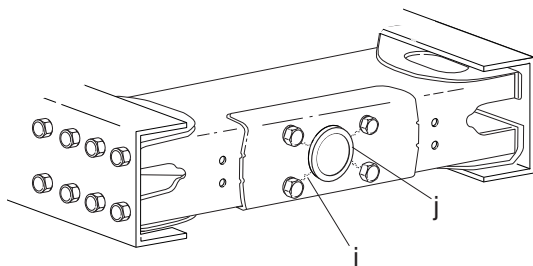
Lubricate the coupling with VBG mechanism oil. For maximum effect, the coupling must be open when it is being lubricated.

- Lubrication points (see drawing on the left)



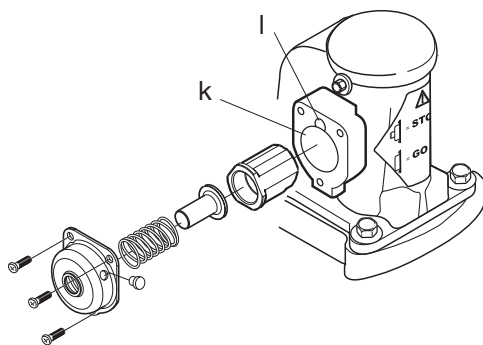
### Attachment check

- Remove the coupling jaw and clean the shaft of rust and rubber residue.
- Check that the coupling jaw is neither bent, nor has cracks or any damage due to electrolysis.
- Check the wear limits as per below:
  - F max.  $\varnothing$  67.2 mm (without bushings)
  - G min.  $\varnothing$  61.6 mm



- Check that there is no cracks forming or deformation on the drawbeam (i) and that the drawbeam sleeve (j) is properly attached.

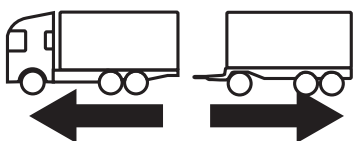
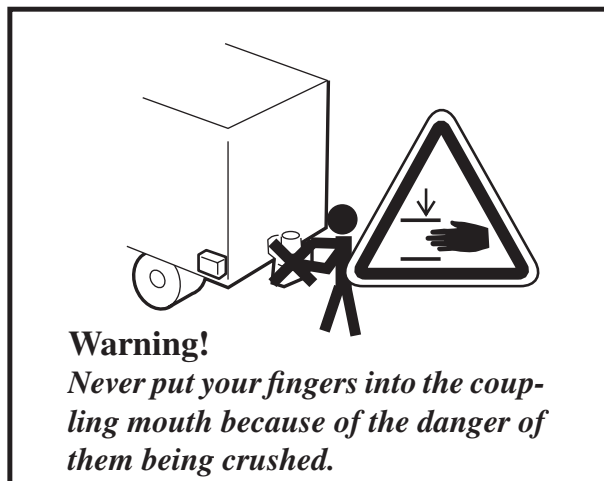
Tightening torque M20 quality 8.8 (dry): 370 Nm.



### Change of Indicator/locking pin

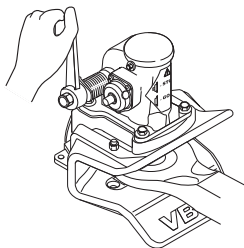
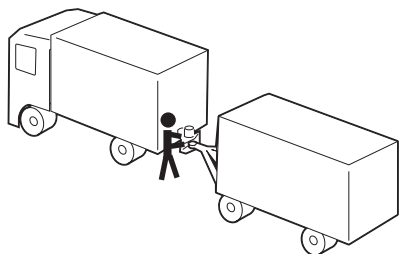
- Loosen the three bolts holding the lid.
- Remove remaining parts.
- Clean the bearing surfaces for the locking pin (k) and lubricate with thin grease. Check that the centring pin (l) is correctly fitted.
- Mount the parts according to the figure.

# Driver instructions



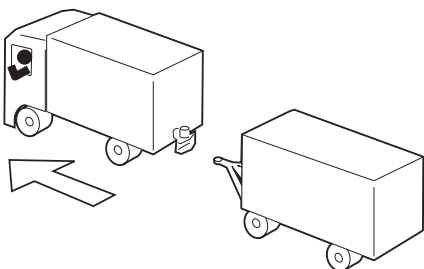
## Uncoupling without power actuator

1



Stand by the coupling handle.  
Lift the handle 90°, the handle locks. The coupling is now open.

2

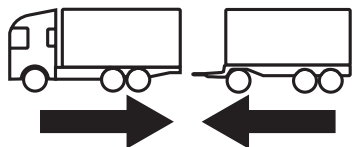


Uncouple the trailer. The coupling is closed when the trailer is disconnected.



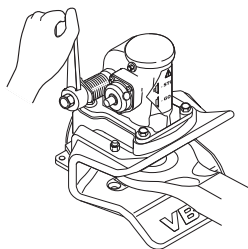
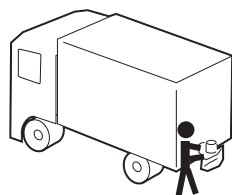
*For functional and road safety reasons, only those steps described in the Driver instructions may be carried out using the control box, power actuator, or air lines during coupling and uncoupling.*

*If the coupling does not go to locked position after repeated attempts at coupling, the power actuator must be uncoupled immediately. Contact the nearest workshop for fault detection and remedial measures.*



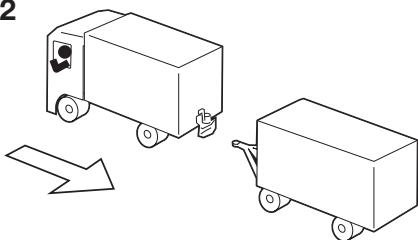
## Coupling without power actuator

1



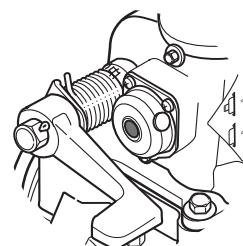
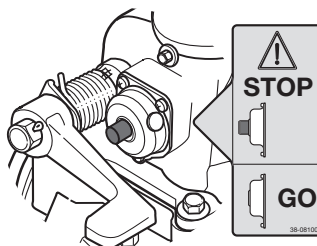
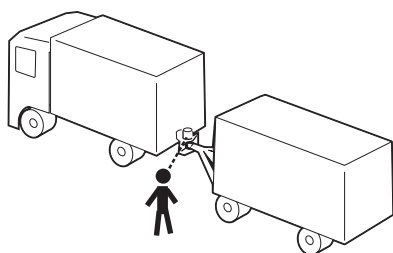
Stand by the coupling handle.  
Lift the handle 90°, the handle locks. The coupling is now open.

2



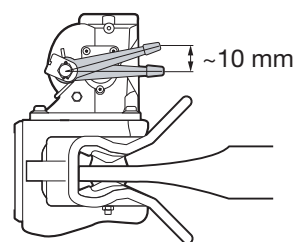
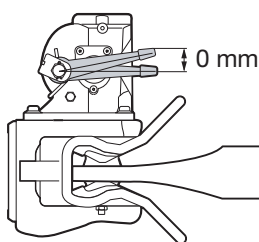
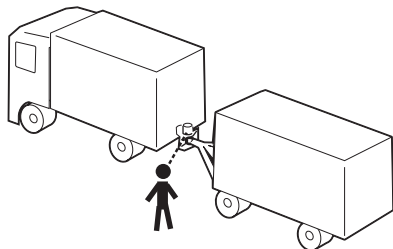
Connect to the trailer.

4



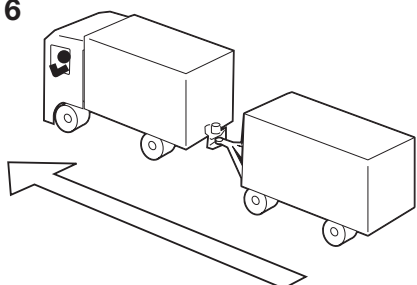
Check that the Indicator pin is completely in.  
*If the Indicator pin is not completely in, the coupling is open and driving is not, under any circumstances, permitted!*  
Contact nearest workshop for remedial measures.

5

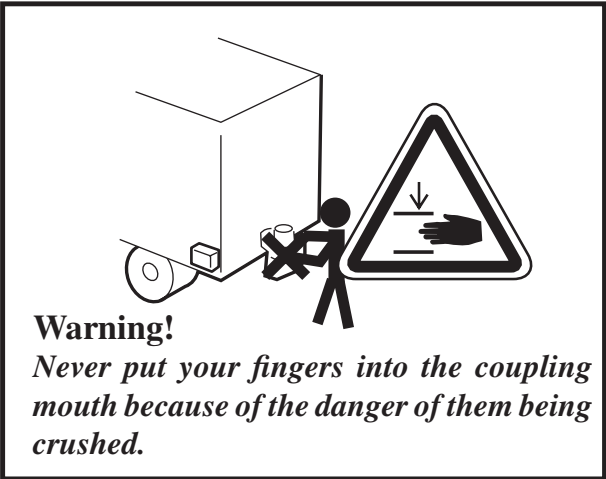


Check that there is approx. 10 mm movement of the handle before the indicator pin moves outwards. *If there is no free movement of the handle the coupling is open and driving is not, under any circumstances, permitted!* Contact nearest workshop for remedial measures.

6

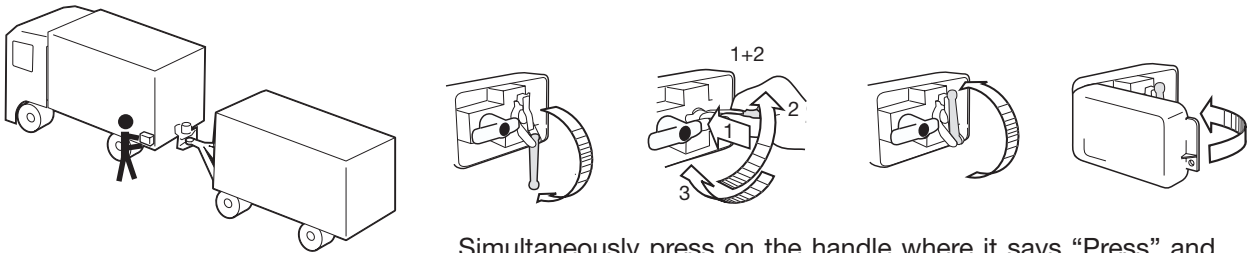


The trailer is secured and driving can begin.



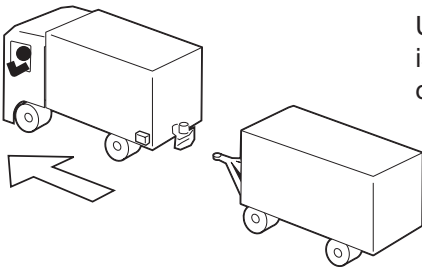
**Uncoupling**

1

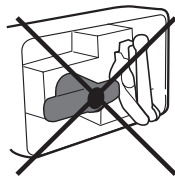
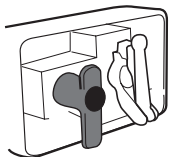


Simultaneously press on the handle where it says "Press" and turn the handle anti-clockwise to "OPEN". Then turn it back to "CLOSE".

2

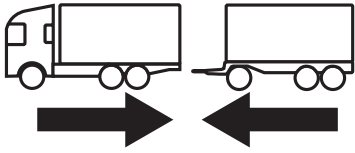


Uncouple the trailer. The coupling is closed when the trailer is disconnected.

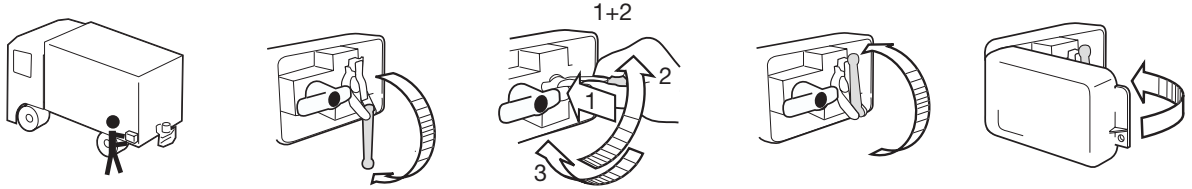


Before any work or service is carried out on the coupling all air supply to the coupling must be cut off. Cut off the air supply by turning the control box' red handle a quarter turn anti-clockwise to OFF.

## Coupling

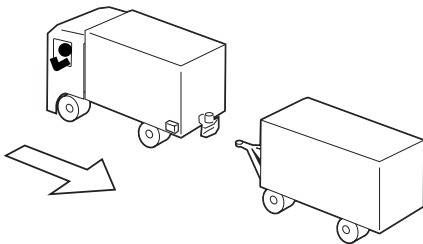


1



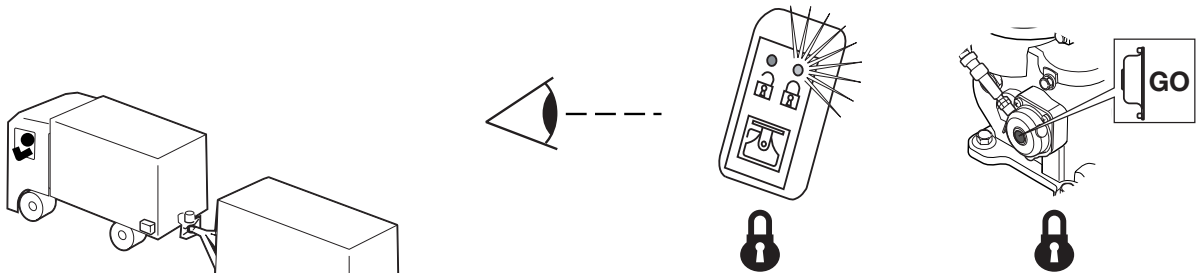
Simultaneously press on the handle where it says "Press" and turn the handle anti-clockwise to "OPEN". Then turn it back to "CLOSE".

2



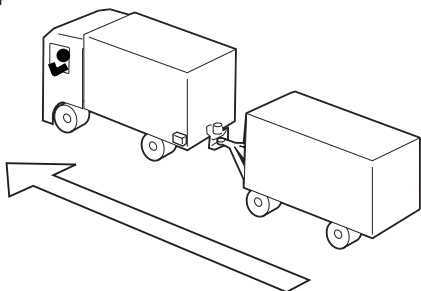
Couple to the trailer.

3



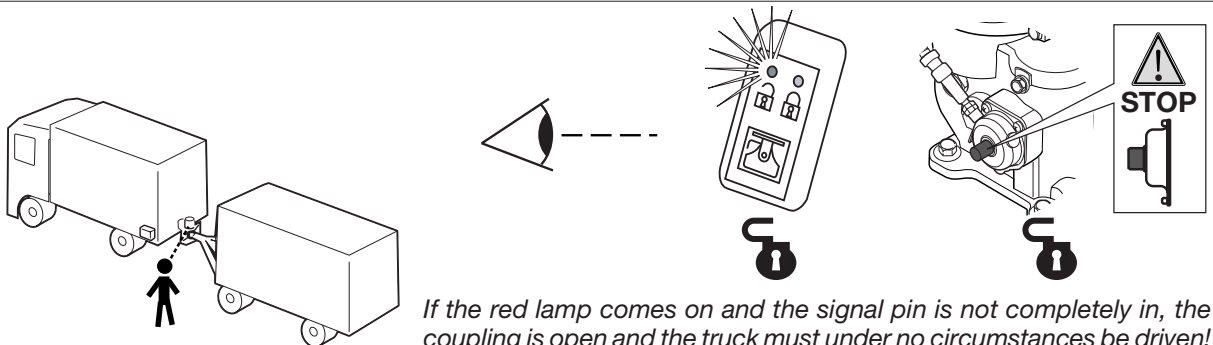
Check that the signal pin goes fully in, and that the green warning lamp in the cab is on. The coupling is closed and secured, and the truck can now be driven.

4



The trailer is secured and driving may begin.

5



If the red lamp comes on and the signal pin is not completely in, the coupling is open and the truck must under no circumstances be driven! Contact nearest workshop for remedial measures.

**AUSTRALIA**

TRANSPAC LIMITED  
P O Box 217 1 Cherry Lane  
AU - 3028 PO LAVERTON, VIC 3028  
Tel +61 3 92 67 24 44  
Fax +61 3 93 69 48 26

**BELGIUM/LUXEMBOURG**

WABCO Belgium S.A. - N.V.  
Petrus Bayensstraat 70  
BE - 1702 GROOT-BIJGAARDEN  
Tel +32 24810900  
Fax +32 24633659

**DENMARK**

VBG PRODUKTER A/S  
Industribuen 20-22  
DK - 5592 EJBY  
Tel +45 6446 1919  
Fax +45 6446 1088

**ESTONIA**

GOKART AS  
Ümera 26  
EE-13816 TALLINN  
Tel +372 6230622  
Faks +372 6230621

**FINLAND**

H KRAATZ OY  
Ruukkimestarintie 9  
FI - 02330 ESPOO  
Tel +358 9 8093100  
Fax +358 9 80931099

**FRANCE**

ONSPOT Sàrl  
14 Route de Sarrebruck  
FR - 57645 MONTROY-FLANVILLE  
Tel +33 3 8776 3080  
Fax +33 3 8776 1944

**GERMANY**

RINGFEDER VBG GMBH  
Oberschlesienstrasse 15  
DE - 47807 KREFELD  
Tel +49 2151 835 0  
Fax +49 2151 835 200

**GREAT BRITAIN**

FONTAINE INTERNATIONAL  
EUROPE LTD.  
Enterprise Way  
GB - LOWTON WA3 2AG  
Tel +44 1942 686000  
Fax +44 1942 686006

**ICELAND**

OSAL OSKAR ANDERSSON  
Tangarhofdi 4  
IS - 110 REYKJAVIK  
Tel +354 587 6619  
Fax +354 187 7719

**IRELAND**

NEWBRIDGE METAL PRODUCTS LTD  
Industrial Estate  
IE - NEWBRIDGE, Co Kildare  
Tel +353 45 431 502  
Fax +353 45 433 747

**ISRAEL**

H KLEIN & SONS LTD  
P O Box 1093  
Industrial Area-North  
IL - ASHDOD 77109  
Tel +972 8856 4330  
Fax +972 8856 4324

**ITALY**

NORDAUTO Torino S.R.L.  
Via Lanzo 52  
IT - 10040 VAL DELLA TORRE (TO)  
Tel +39 011 96 89 005  
Fax +39 011 96 89 753

**JAPAN**

SHINKO BOEKI CO LTD  
Shibuya Central Bldg  
3-14 Udagawa-cho, Shibuya-ku,  
JP - TOKYO 150  
Tel +81 3 33463 0941  
Fax +81 3 33463 1707

**NETHERLANDS**

WABCO AUTOMOTIVE B.V.  
Postbus 8704  
NL - 3009 AS ROTTERDAM  
Tel +31 10 2888 600  
Fax +31 10 2888 601

**NEW ZEALAND**

TRANSPORT SPECIALTIES LTD  
P O BOX 98-971  
NZ - S.A.M.C., Wiri, AUCKLAND  
Tel +64 9 980 7300  
Fax +64 9 980 7306

**NORWAY**

VBG PRODUKTER A/S  
Postboks 94 Leirdal  
NO - 1009 OSLO  
Tel +47 23 14 16 60  
Fax +47 23 14 16 61

**POLAND**

HYVA POLSKA Sp. z o.o.  
ul. Mysliwska 68  
PL - 30718 KRAKÓW  
Tel +48 12 658 65 05  
Fax +48 12 658 44 39

**SWEDEN**

VBG PRODUKTER AB  
Box 1216  
SE - 462 28 VÄNERSBORG  
Tel +46 521 277700  
Fax +46 521 277795

**Branch office:**

VBG PRODUKTER AB  
Kronoskogsvägen 8  
SE - 903 61 UMEÅ  
Tel +46 90 271 10  
Fax +46 90 326 11

**SWITZERLAND**

AGL für LASTWAGENZUBEHÖRE  
Postfach  
CH - 6048 HORW  
Tel +41 41 340 25 25  
Fax +41 41 340 31 79

**SWITZERLAND**

AMBOFIX METALLBAU  
U. Ambühl  
Am Schachenrain 36  
CH - 4562 BIBERIST  
Tel +41 32 6 72 36 83  
Fax +41 32 67 22 267

**TANZANIA**

SUPERDOLL TRAILERS MANUFACTURE CO. LTD  
P:O Box 16541  
TZ - DAR ES SALAAM  
Tel +255 22 2860930  
Fax +255 22 2865412



VBG PRODUKTER AB  
Herman Kreftings gata 4  
Box 1216  
SE-462 28 VÄNERSBORG  
Tel +46 521 27 77 00  
E-mail info@vbg.se  
www.vbg.se